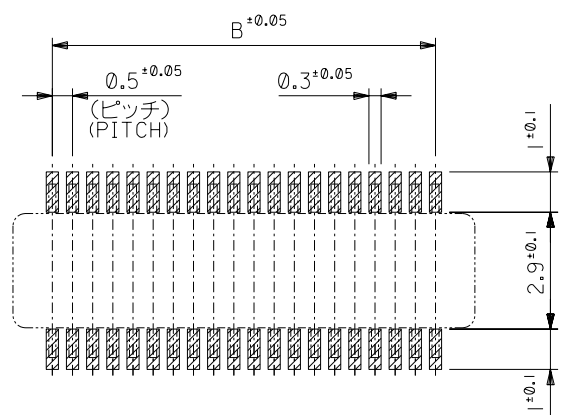
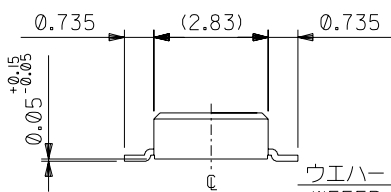
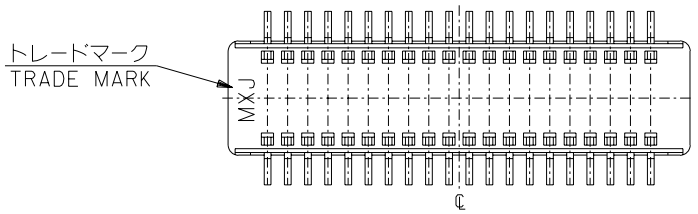
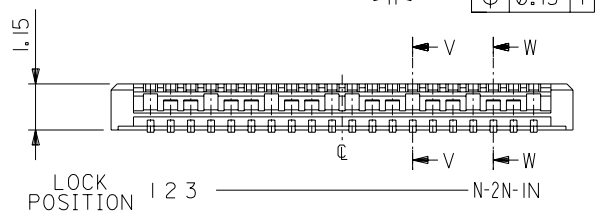
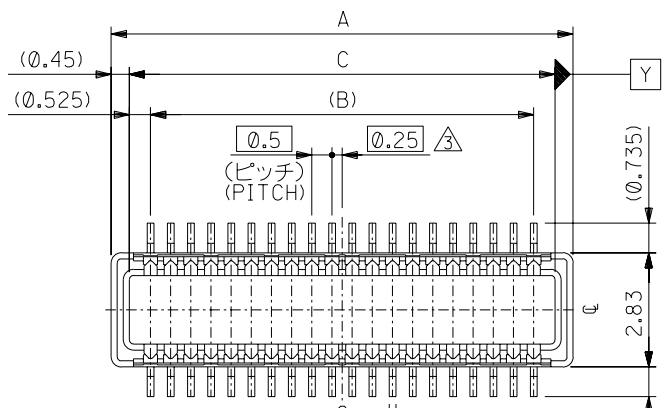
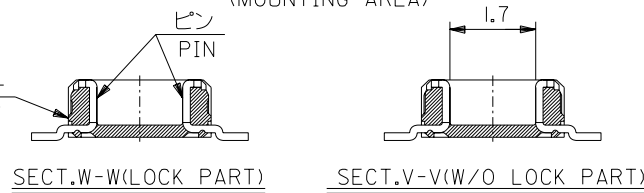


DWG. NO. SD-55560-006



参考基板レイアウト (マウント面)
P.C. BOARD PATTERN
DIMENSION. (REF.)
(MOUNTING AREA)



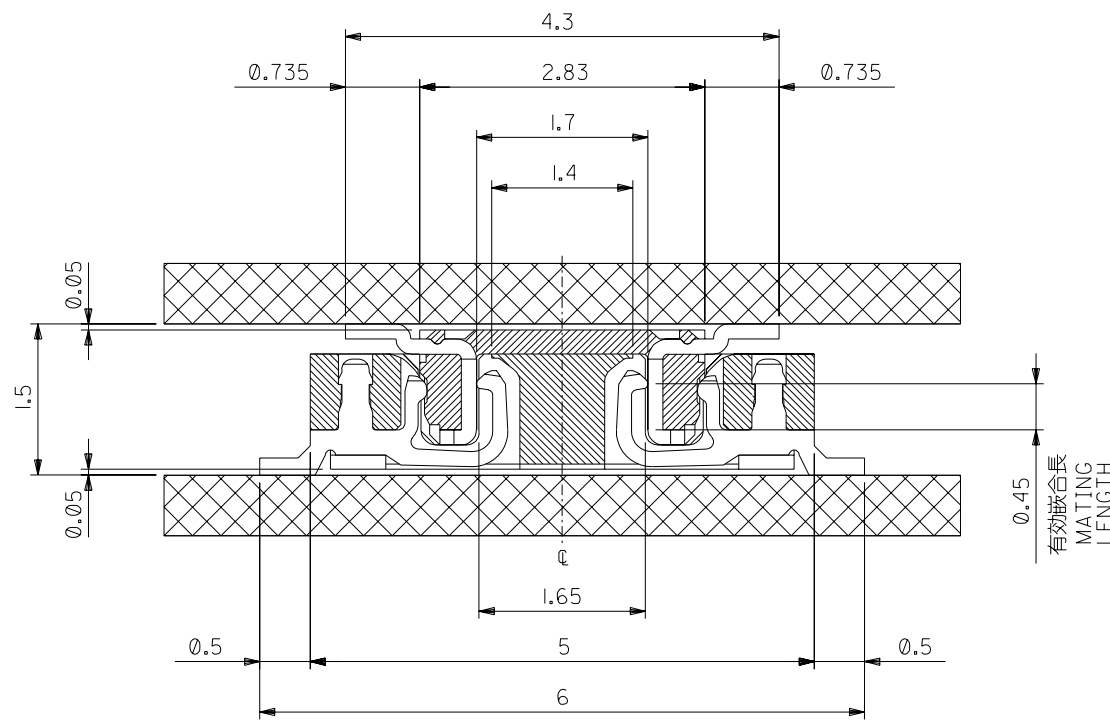
NON	20.55	19.5	21.45	55560-0801	80
10,21	15.55	14.5	16.45	-0601	60
2,4,8,10,16,18,22,24	13.05	12.0	13.95	-0501	50
2,4,8,10,14,16,20,22	12.05	11.0	12.95	-0461	46
2,3,5,6,8,9,12,13,15,16,18,19	10.55	9.5	11.45	-0401	40
2,3,4,5,7,8,9,10,11,13,14,15,16	9.05	8.0	9.95	-0341	34
ALL	8.05	7.0	8.95	-0301	30
	6.55	5.5	7.45	-0241	24
	6.05	5.0	6.95	-0221	22
	5.55	4.5	6.45	-0201	20
4.55	3.5	5.45	55560-0161	16	
LOCK POSITION	C	B	A	MATERIAL NO.	極数 CIRCUIT

DO NOT SCALE DRAWING

64 NO. DRWN: CH'K: APPR: 63 NO. DRWN: CH'K: APPR: REVISED 62 NO. J2003-2517 DRWN: S.AIHARA '03/03/31 CH'K: M.SASAO APPR: M.SASAO G REVISED 61 NO. J2003-1929 DRWN: T.YASUI '03/11/23 CH'K: T.IITO APPR: T.IITO F REVISED 60 NO. J2003-1468 DRWN: T.YASUI '02/11/25 CH'K: T.IITO APPR: T.YAMAGUCHI E REV DESCRIPTION MATERIAL 材料 FINISH 仕上げ WIRE RANGE 適用線径範囲 INS. RANGE 被覆外径	注記参照 SEE NOTES // // //
---	-------------------------------------

GENERAL TOLERANCES: (UNLESS SPECIFIED) 一般公差 10 UNDER 未満 ±0.2 10 OVER 30 UNDER 未満 ±0.25 30 OVER 以上 ±0.3 ANGLE 角度 ±3°	MODEL NO. 55560-***I SCALE 1/1 DESIGN UNITS <input checked="" type="checkbox"/> mm <input type="checkbox"/> INCH DRAWN BY & DATE S.AIHARA '00/10/5 CHECKED BY & DATE M.SASAO '03/03/31 APPROVED BY & DATE M.SASAO '03/03/31 CAD FILENAME 55560006.S01	DIMENSIONS: <input type="checkbox"/> mm <input type="checkbox"/> INCH <input checked="" type="checkbox"/> mm ONLY SHT REVISIONS ON CAD ONLY TITLE: 0.5 B-To-B Conn PLUG Assy(Hgt=1.5mm) MOLEX MOLEX INCORPORATED MATERIAL NO. SEE CHART DRAWING NO. SD-55560-006 SHEET NO. 1 OF 2	EN-02J(097) MXJ-54
---	--	--	--------------------

DWG. NO.
SD-55560-006



注記 NOTES:

1. 使用材料 MATERIAL
 ウェハー: 液晶ポリマー ガラス充填 ,UL94V-0(黒)
 WAFER :LIQUID CRYSTAL POLYMER
 (GLASS FILLED), UL94V-0 (COLOR:BLACK)
 ピン :黄銅 (t=0.15)
 PIN :BRASS(t=0.15)
2. メッキ仕様 PLATING
 金メッキ 0.25 MICROMETER MINIMUM (コンタクト部)
 GOLD 0.25 MICROMETER MINIMUM (CONTACT AREA).
 金メッキ 0.4 MICROMETER MAXIMUM (テール部)
 GOLD 0.4 MICROMETER MAXIMUM (TAIL AREA).
 下地メッキ: ニッケルメッキ 1.5 MICROMETER MINIMUM
 UNDER PLATING : NICKEL 1.5 MICROMETER MINIMUM.
3. (全極数/2) = 偶数の場合に適用。
 APPLY FOR (CIRCUIT/2)=EVEN.
4. 嵌合相手: 54722 シリーズ, 54037 シリーズ
 MATE WITH : 54722 SERIES, 54037 SERIES.
5. テール平坦度は, 0.1 MAXIMUM
 TAIL COPLANARITY TO BE 0.1 MAXIMUM.

嵌合断面図 (参考)
MATED DRAWING (REF.)

DO NOT SCALE DRAWING

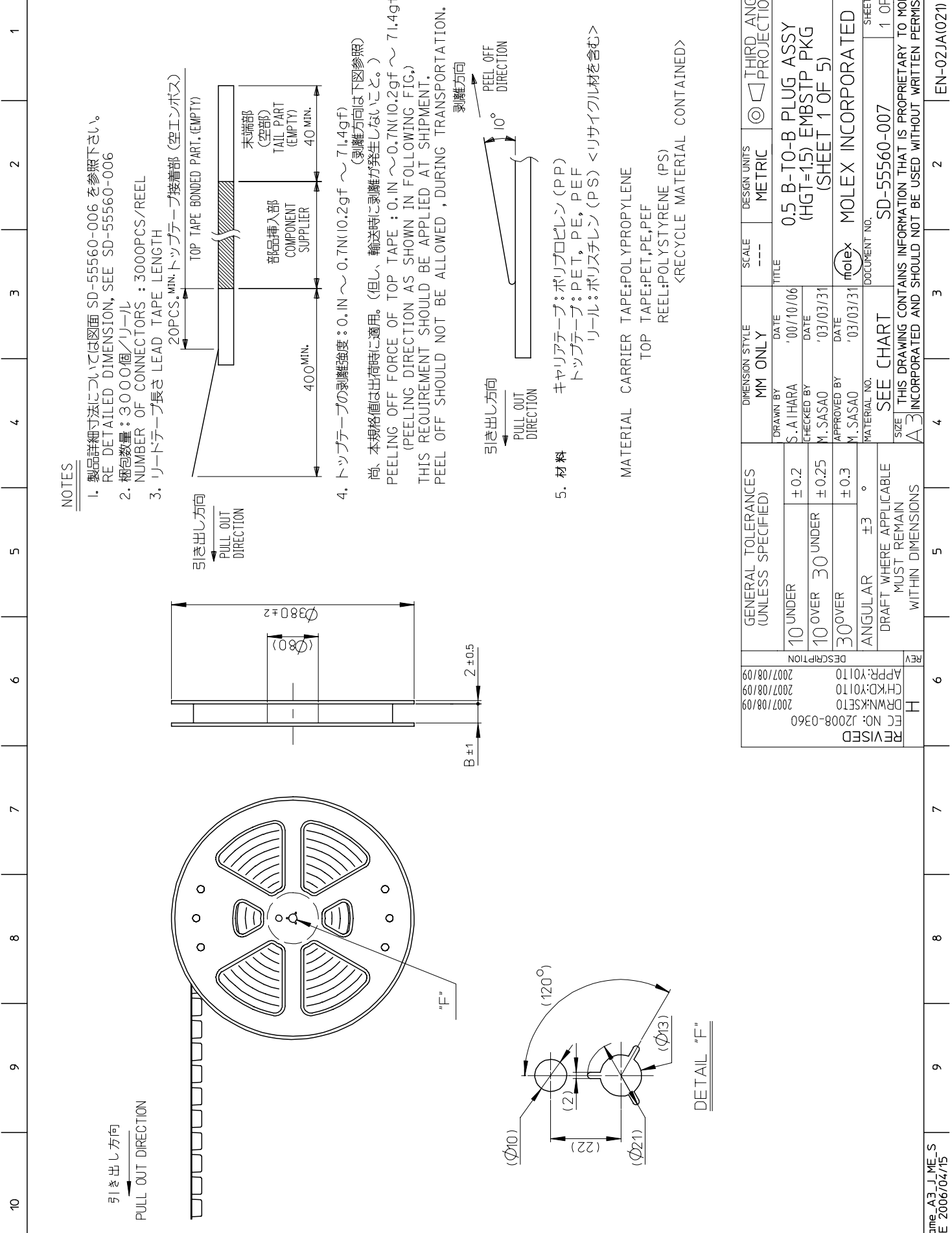
64NO. DRWN: CH'K: APPR:	63NO. DRWN: CH'K: APPR:	REVISED 62NO. J2003-2517 DRWN: S.AIHARA '03/03/31 CH'K: M.SASAO APPR: M.SASAO	REVISED 61NO. J2003-1929 DRWN: T.YASUJI '03/11/23 CH'K: T.ITO APPR: T.ITO	REVISED 60NO. J2003-1468 DRWN: T.YASUJI '02/11/25 CH'K: T.ITO APPR: T.YAMAGUCHI	MATERIAL 材料 注記参照 SEE NOTES	FINISH 仕上げ //	WIRE RANGE 適用線径範囲 //	INS. RANGE 被覆外径 //
----------------------------	----------------------------	---	---	---	----------------------------------	------------------	-------------------------	-----------------------

GENERAL TOLERANCES: (UNLESS SPECIFIED) 一般公差	10 UNDER 未満 30 UNDER 未満	10 OVER 以上 30 OVER 以上	0.2 0.25 0.3
SCALE 1:1	DRAWN BY & DATE S.AIHARA '00/10/5	CHECKED BY & DATE M.SASAO '03/03/31	APPROVED BY & DATE M.SASAO '03/03/31
CAD FILENAME 55560006.S02	MATERIAL NO. SEE CHART	DRAWING NO. SD-55560-006	SHEET NO. 2 OF 2

MODEL NO. 55560-***I DESIGN UNITS <input checked="" type="checkbox"/> mm <input type="checkbox"/> INCH	DIMENSIONS: <input type="checkbox"/> mm <input type="checkbox"/> INCH <input checked="" type="checkbox"/> mm ONLY	SHT 1 REV REVISE ON CAD ONLY
TITLE: 0.5 B-To-B Conn PLUG Assy(Hgt=1.5mm)	MOLEX INCORPORATED	SIZE B

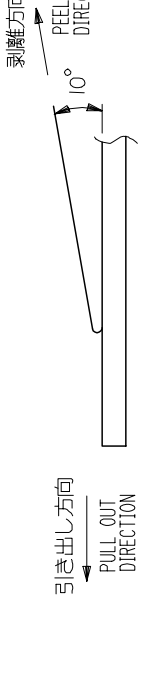
*THIS DRAWING CONTAINS INFORMATION THAT IS PROPRIETARY TO MOLEX INCORPORATED AND SHOULD NOT BE USED WITHOUT WRITTEN PERMISSION.			
EN-02J(097) MXJ-54			

55560006.S02



NOTES

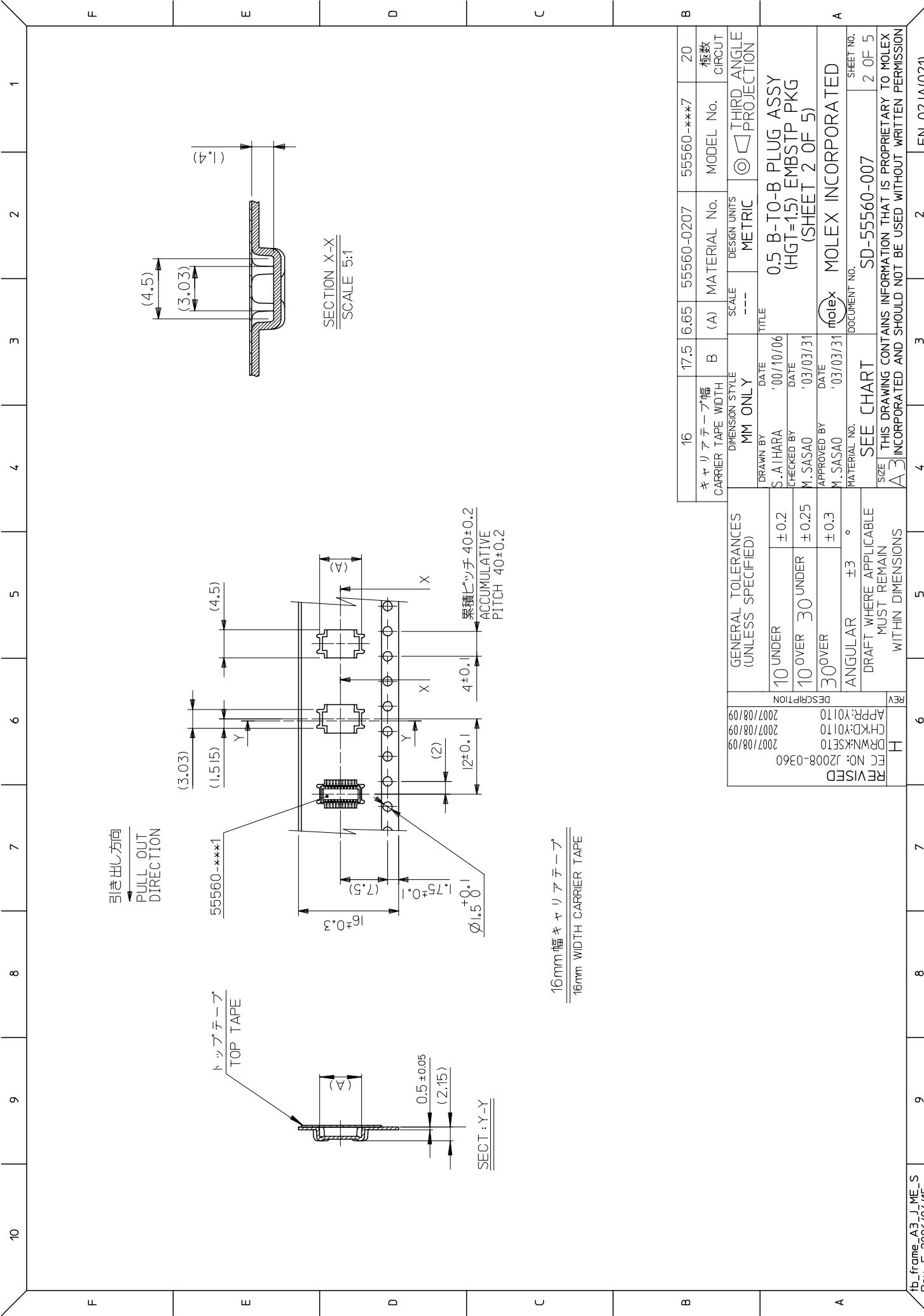
- 製品詳細寸法については図面 SD-55560-006 を参照下さい。
RE DETAILED DIMENSION, SEE SD-55560-006
- 梱包数量: 3000個/リール
NUMBER OF CONNECTORS: 3000PCS/REEL
- リードテープ長さ LEAD TAPE LENGTH
20PCS. MIN. TOP TAPE BONDED PART (EMPTY)
- トップテープの剥離強度: 0. IN ~ 0.7N(10.2gf ~ 71.4gf)
(剥離方向は下図参照)
尚、本規格値は出荷時に適用。(但し、輸送時に剥離が発生しないこと。)
PEELING OFF FORCE OF TOP TAPE: 0. IN ~ 0.7N(10.2gf ~ 71.4gf)
(PEELING DIRECTION AS SHOWN IN FOLLOWING FIG.)
THIS REQUIREMENT SHOULD BE APPLIED AT SHIPMENT.
PEEL OFF SHOULD NOT BE ALLOWED, DURING TRANSPORTATION.



5. 材料 キャリアテープ: ポリプロピレン (PP)
トップテープ: PET, PE, PEF
リール: ポリスチレン (PS) <リサイクル材を含む>

MATERIAL CARRIER TAPE: POLYPROPYLENE
TOP TAPE: PET, PE, PEF
REEL: POLYSTYRENE (PS)
<RECYCLE MATERIAL CONTAINED>

GENERAL TOLERANCES (UNLESS SPECIFIED)	MM ONLY	SCALE	DESIGN UNITS	THIRD ANGLE PROJECTION
10 UNDER	± 0.2	---	METRIC	☉
10 OVER	± 0.25	TITLE		
30 OVER	± 0.3	0.5 B-T-O-B PLUG ASSY (HGT=1.5) EMBSTP PKG (SHEET 1 OF 5)		
ANGULAR	± 3 °	DRAWN BY DATE		
DRAFT WHERE APPLICABLE MUST REMAIN WITHIN DIMENSIONS		S. AIHARA '00/10/06		
		CHECKED BY DATE		
		M. SASAO '03/03/31		
		APPROVED BY DATE		
		M. SASAO '03/03/31		
		MATERIAL NO. DOCUMENT NO.		
		MOLEX INCORPORATED SD-55560-007		
		SHEET NO. 1 OF 5		
SIZE THIS DRAWING CONTAINS INFORMATION THAT IS PROPRIETARY TO MOLEX INCORPORATED AND SHOULD NOT BE USED WITHOUT WRITTEN PERMISSION				
A3				



引き出し方向
PULL OUT
DIRECTION

トップテープ
TOP TAPE

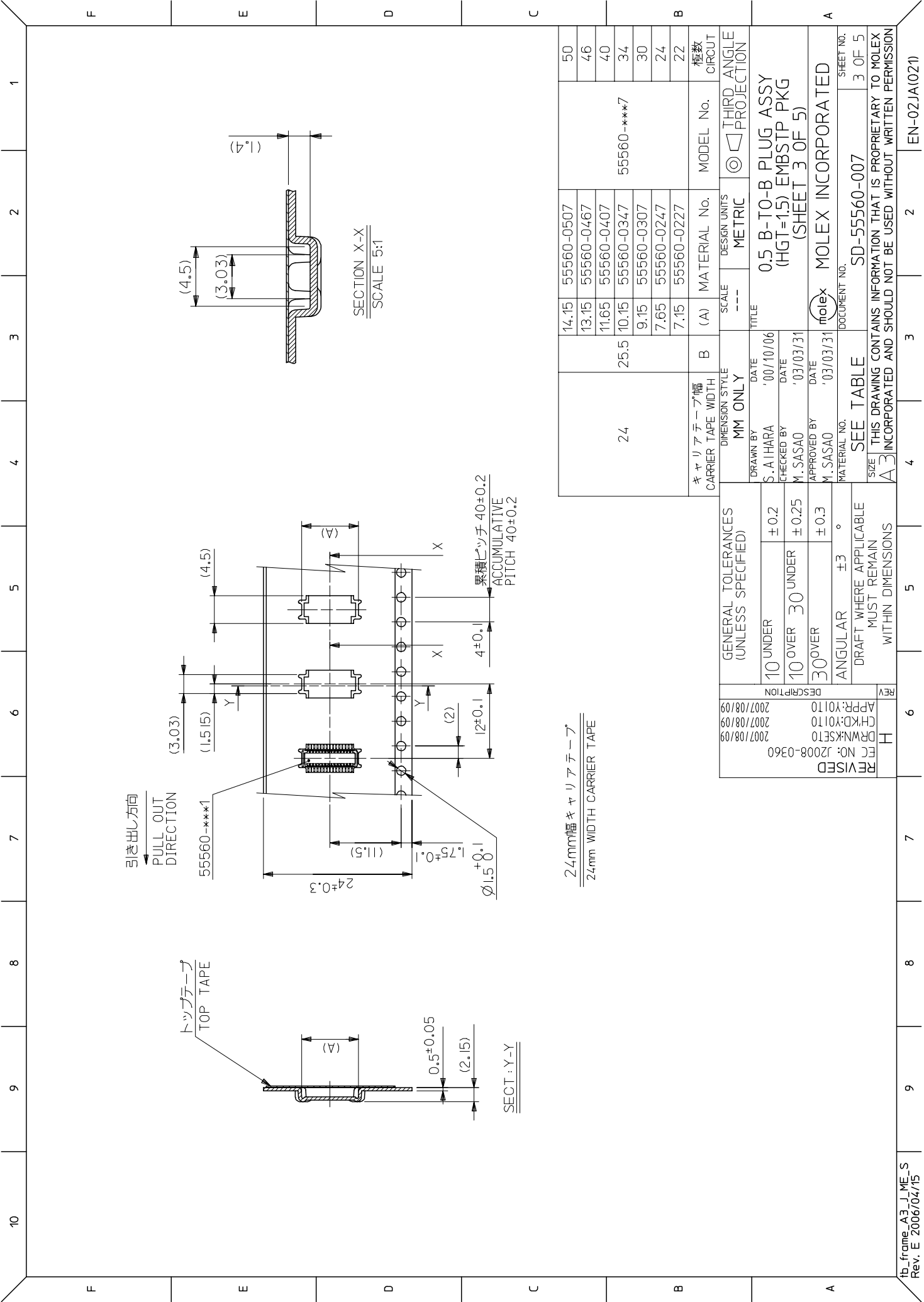
SECTION X-X
SCALE 5:1

SECTION Y-Y

16mm幅キャリアテープ
16mm WIDTH CARRIER TAPE

DESCRIPTION		REV
APPR:Y0110	2007/08/09	6
CHKD:Y0110	2007/08/09	
DRWN:KSET10	2007/08/09	H
FC NO: J2008-0360		
REVISED		
GENERAL TOLERANCES (UNLESS SPECIFIED)		
10 UNDER	± 0.2	
10 OVER	30 UNDER	± 0.25
30 OVER		± 0.3
ANGULAR	± 3 °	
DRAFT WHERE APPLICABLE MUST REMAIN WITHIN DIMENSIONS		

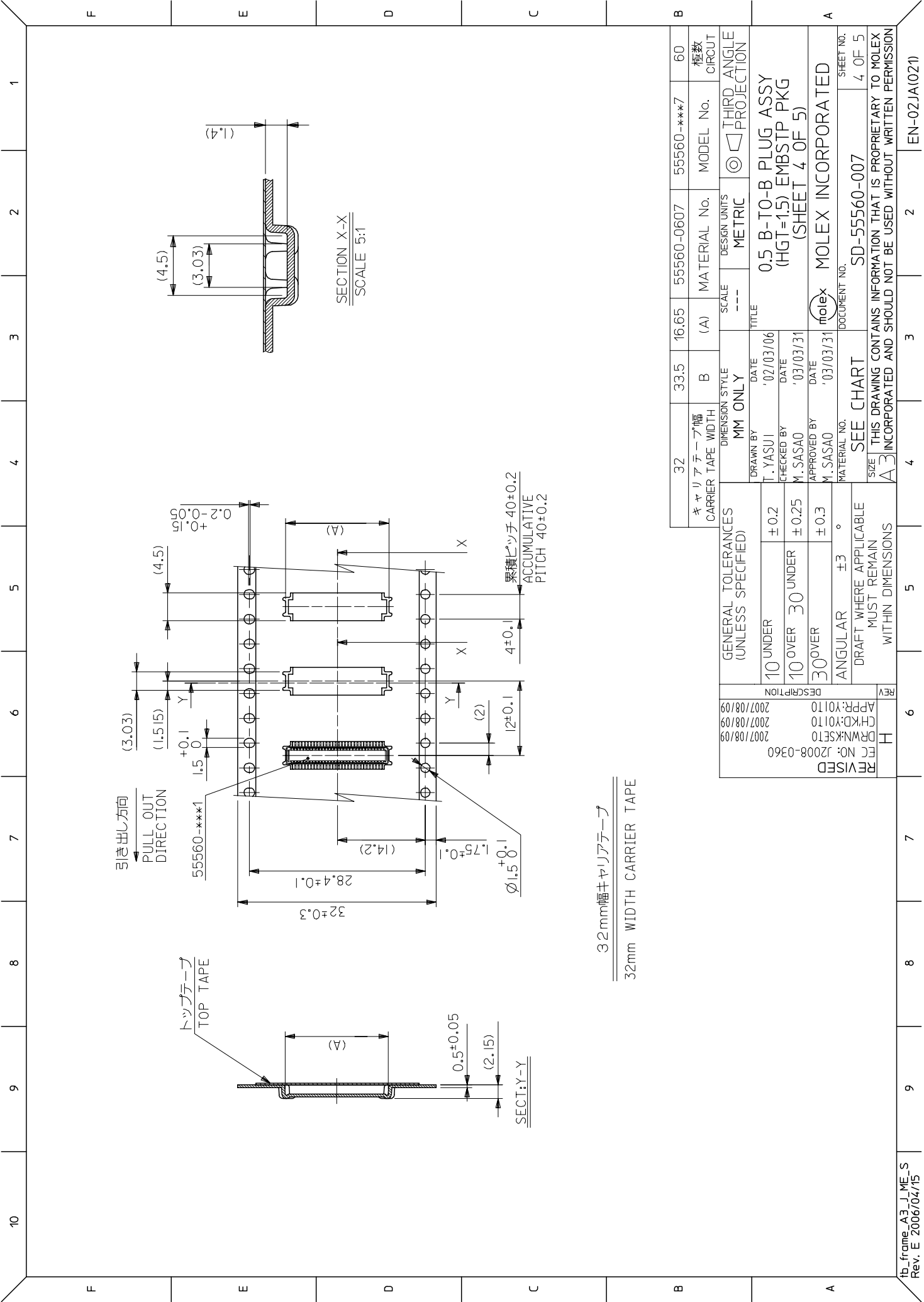
16	17.5	6.65	55560-0207	55560-***7	20
キャリアテープ幅 CARRIER TAPE WIDTH	B	(A)	MATERIAL No.	MODEL No.	極数 CIRCUT
DIMENSION STYLE		SCALE	DESIGN UNITS	THIRD ANGLE PROJECTION	
MM ONLY	---	METRIC			
DRAWN BY	DATE	TITLE			
S. AIHARA	'00/10/06	0.5 B-T0-B PLUG ASSY (HGT=1.5) EMBSTP PKG (SHEET 2 OF 5)			
CHECKED BY	DATE				
M. SASAO	'03/03/31				
APPROVED BY	DATE				
M. SASAO	'03/03/31				
MATERIAL No.	DOCUMENT No.	MOLEX INCORPORATED			
SEE CHART	SD-55560-007	SHEET NO. 2 OF 5			
SIZE THIS DRAWING CONTAINS INFORMATION THAT IS PROPRIETARY TO MOLEX INCORPORATED AND SHOULD NOT BE USED WITHOUT WRITTEN PERMISSION					



24mm幅 キャリアテープ
24mm WIDTH CARRIER TAPE

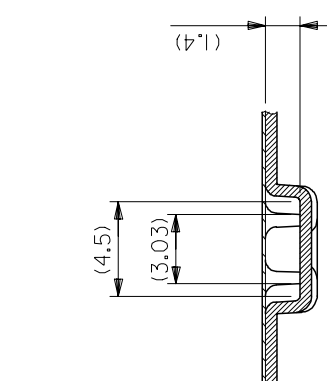
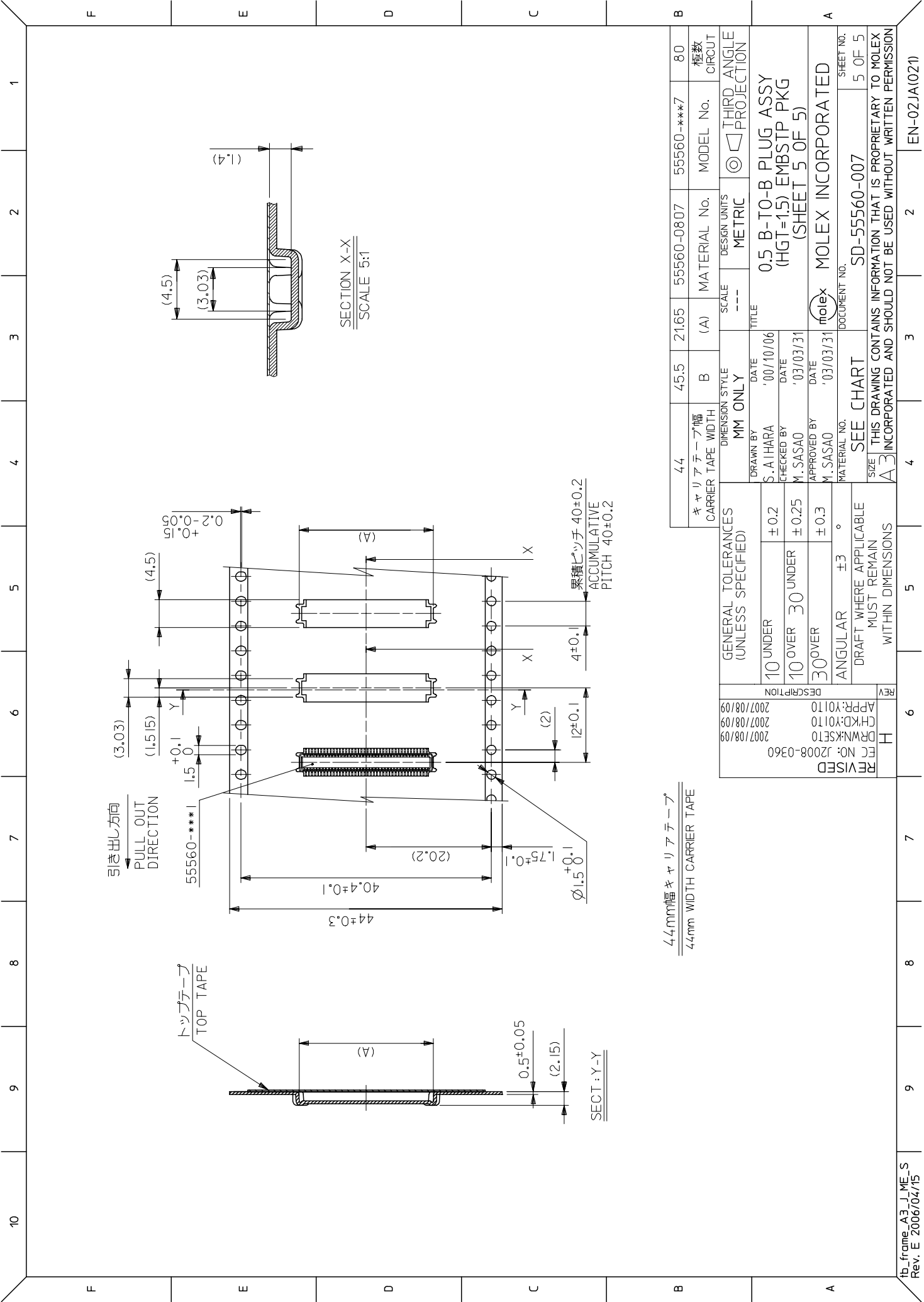
24	14.15	55560-0507	50		
	13.15	55560-0467	46		
	11.65	55560-0407	40		
	10.15	55560-0347	34		
	9.15	55560-0307	30		
	7.65	55560-0247	24		
	7.15	55560-0227	22		
キャリアテープ幅 CARRIER TAPE WIDTH	B	(A)	MATERIAL No.	MODEL No.	極数 CIRCUT

GENERAL TOLERANCES (UNLESS SPECIFIED)	SCALE	DESIGN UNITS	THIRD ANGLE PROJECTION
10 UNDER ±0.2	---	METRIC	◎
10 OVER 30 UNDER ±0.25	TITLE 0.5 B-T0-B PLUG ASSY (HGT=1.5) EMBSTP PKG (SHEET 3 OF 5)		
30 OVER ±0.3	DRAWN BY S. AIHARA DATE '00/10/06		
ANGULAR ±3	CHECKED BY M. SASAO DATE '03/03/31		
DRAFT WHERE APPLICABLE MUST REMAIN WITHIN DIMENSIONS	APPROVED BY M. SASAO DATE '03/03/31		
REVISED	MATERIAL No.		
FC NO.: J2008-0360	DOCUMENT No.		
DRM:K:SET0	SEE TABLE		
CHKD:Y0110	SD-55560-007		
APR:Y0110	MOLEX INCORPORATED		
2007/08/09	SHEET NO.		
2007/08/09	3 OF 5		
2007/08/09	THIS DRAWING CONTAINS INFORMATION THAT IS PROPRIETARY TO MOLEX INCORPORATED AND SHOULD NOT BE USED WITHOUT WRITTEN PERMISSION		



32mm幅キャリアテープ
32mm WIDTH CARRIER TAPE

32	キャリアテープ幅 CARRIER TAPE WIDTH	33.5	16.65	55560-0607	55560-***7	60
		B	(A)	MATERIAL No.	MODEL No.	極数 CIRCUT
GENERAL TOLERANCES (UNLESS SPECIFIED)		DIMENSION STYLE MM ONLY		SCALE ---	DESIGN UNITS METRIC	THIRD ANGLE PROJECTION
10 UNDER	±0.2	DRAWN BY T. YASUI	DATE '02/03/06	TITLE 0.5 B-T0-B PLUG ASSY (HGT=1.5) EMBSTP PKG (SHEET 4 OF 5)		
10 OVER	30 UNDER	CHECKED BY M. SASAO	DATE '03/03/31	DOCUMENT NO. MOLEX INCORPORATED		
30 OVER	±0.3	APPROVED BY M. SASAO	DATE '03/03/31	SHEET NO. 4 OF 5		
ANGULAR	±3	MATERIAL No.		SD-55560-007		
DRAFT WHERE APPLICABLE MUST REMAIN WITHIN DIMENSIONS		SEE CHART		THIS DRAWING CONTAINS INFORMATION THAT IS PROPRIETARY TO MOLEX INCORPORATED AND SHOULD NOT BE USED WITHOUT WRITTEN PERMISSION		
DESCRIPTION		REV		EN-02JA(021)		
APR:Y01T0 2007/08/09		H				
CHKD:Y01T0 2007/08/09						
DRWN:KSET0 2007/08/09						
EC NO: J2008-0360		REVISED				



44mm幅キャリアテープ
44mm WIDTH CARRIER TAPE

44	キャリアテープ幅 CARRIER TAPE WIDTH	45.5	21.65	55560-0807	55560-***7	80
	GENERAL TOLERANCES (UNLESS SPECIFIED)	DIMENSION STYLE MM ONLY	SCALE ---	MATERIAL No.	MODEL No.	極数 CIRCUT
	10 UNDER ± 0.2	DRAWN BY S. AIHARA	DATE '00/10/06	DESIGN UNITS METRIC		
	10 OVER 30 UNDER ± 0.25	CHECKED BY M. SASAO	DATE '03/03/31	THIRD ANGLE PROJECTION		
	30 OVER ± 0.3	APPROVED BY M. SASAO	DATE '03/03/31	TITLE 0.5 B-T0-B PLUG ASSY (HGT=1.5) EMBSTP PKG (SHEET 5 OF 5)		
	ANGULAR ± 3	MATERIAL No.	DOCUMENT No.	MOLEX INCORPORATED		
	DRAFT WHERE APPLICABLE MUST REMAIN WITHIN DIMENSIONS	SEE CHART				
	REVISED	SHEET No. 5 OF 5				
	DESCRIPTION	THIS DRAWING CONTAINS INFORMATION THAT IS PROPRIETARY TO MOLEX AND SHOULD NOT BE USED WITHOUT WRITTEN PERMISSION				
	APP:Y01T0 2007/08/09	A3 INCORPORATED				
	CHKD:Y01T0 2007/08/09	2				
	DRWN:K5E10 2007/08/09	3				
	FC No: J2008-0360	4				
		5				
		6				
		7				
		8				
		9				
		10				